

CERTIFIED LAND CORNER RECORDATION

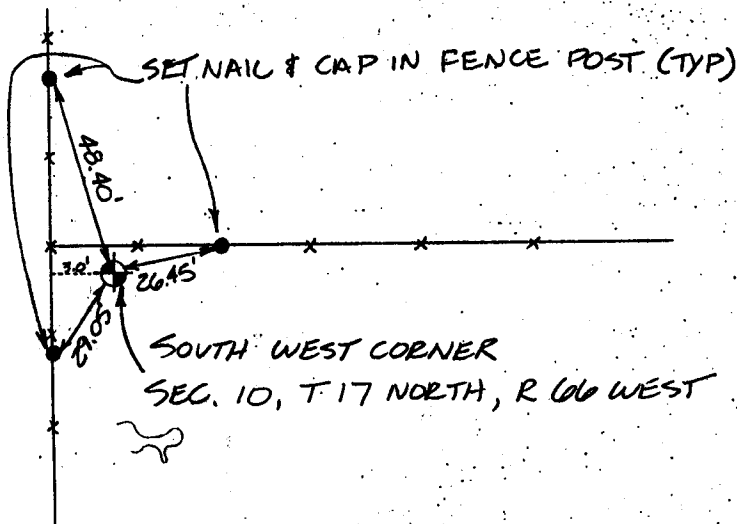
DESCRIPTION OF CORNER EVIDENCE FOUND, AND ORIGINAL RECORD (If known)
 FOUND STONE IN FENCE CORNER

ORIGINAL RECORD CALLS FOR A 36" X 12" X 8" LIMESTONE

DESCRIPTION OF MONUMENT AND ACCESSORIES ESTABLISHED
 TO PERPETUATE THE ORIGINAL LOCATION OF THIS CORNER:

FOUND STONE, SET NAIL & CAP IN FENCE CORNERS AS
 REFERENCE MONUMENTS.

SKETCH, WITH COURSE AND DISTANCE TO ADJACENT CORNER IF DETERMINED IN THIS SURVEY.
 (May Sketch or Paste Reproduction on Reverse Side.)



88 APR 27 PM 12 24

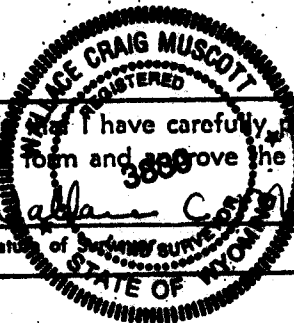
RECEIVED
 LARAMIE COUNTY
 CHEYENNE WY.

043111

I, WALLACE C MUSCOTT certify that I have carefully performed or reviewed the work done on the diagrammed corner as reported on this recordation form and approve the same.

Signature of Wallace C Muscott

#3830
 Registration No.



STATE OF WYOMING,
 Office of Clerk and Recorder,
 County of _____

This "corner record" was filed for record on the _____ day of _____, 19____, was noted on the cross-index plat and is assigned page No. _____, in book No. _____

Frank C Whitehead
 County Official

Cross Index No. <u>J 13</u>	T. <u>17N</u>	R. <u>66W</u>	Mer. <u>6th</u>
_____	T. _____	R. _____	Mer. _____
_____	T. _____	R. _____	Mer. _____
_____	T. _____	R. _____	Mer. _____
_____	T. _____	R. _____	Mer. _____
_____	T. _____	R. _____	Mer. _____
_____	T. _____	R. _____	Mer. _____